

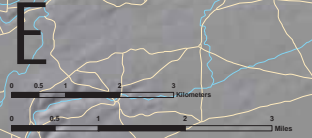
Project Summary

The Tehama County Resource Conservation District, California Native Plant Society (CNPS), Aerial Information Systems (AIS), and The Nature Conservancy (TNC) partnered to conduct a vegetation mapping and monitoring project within a 100,000 acre portion of the Lassen Foothills area of Eastern Tehama County. This pilot project produced information that will aid in the implementation of ecological restoration and wildlife habitat improvement projects within the Lassen Foothills, an area whose vegetation response and development is largely controlled by wildfire. The major components of this project included:

- A vegetation classification at the alliance-level with crosswalks to wildlife habitats
- A detailed map of the current vegetation located within in a pilot study area
- Development of state and transition models for each vegetation type (to identify reference conditions and historic fire regimes)
- A fire condition class map for vegetation (to identify the departure from "natural" conditions)
- Incorporation of this information into the overall Lassen Fire Plan

This map was completed by Aerial Information Systems, in conjunction with the California Native Plant Society (CNPS) based upon a classification system that CNPS and CTRCD developed for the foothills of the southern Cascades and Sierra Nevada. Development of state and transition models for each vegetation type along with the condition class maps were completed by The Nature Conservancy (TNC). These transition models will help predict changes in vegetation resulting from variations in the frequency of fires as well as help land managers determine where prescribed fires will be of most benefit.

Vicinity Map



Metadata:
 Data Coordinates: UTM, Zone 10, Meters, NAD83
 Data Capture Dates: June 2007 to December 2007
 Imagery Date: 2005
 Map Created on: May 29, 2009
 Data Sources: USGS, State of California, and Tehama County

Legend

- Local Roads
- Linear Hydrologic Features
- Tehama County Wildlife Area
- Dye Creek Study Area
- Denny Ranch (south)

- ### Lassen Vegetation MapCode
- Pinus sabiniana WoodlandForest Alliance (Foothill Pine)
 - Pinus ponderosa WoodlandForest Alliance (Ponderosa Pine)
 - Juniperus californica Alliance (California Juniper)
 - Umbellularia californica Alliance (California Bay)
 - Asclepias californica WoodlandForest Alliance (California Buckeye)
 - Quercus waltzei WoodlandForest Alliance (Interior Live Oak Tree)
 - Quercus douglasii WoodlandForest Alliance (Blue Oak)
 - Quercus kelloggii WoodlandForest Alliance (Black Oak)
 - Quercus lobata WoodlandForest Alliance (Valley Oak)
 - Quercus chrysolepis WoodlandForest Alliance (Canyon Live Oak)
 - Southeastern North American Sycamore Emergent and Deciduous Woodland Group
 - Populus fremontii WoodlandForest Alliance (Fremont Cottonwood)
 - Salix laevigata WoodlandForest Alliance (Red Willow)
 - Alnus rhombifolia WoodlandForest Alliance (White Alder)
 - Southwestern North American Riparian/Wash Scrub Shrubland Group
 - Callifernan Chaparral Shrubland Group
 - Quercus conarius Shrubland Alliance (Blackbrush)
 - Mixed Scrub Oak Chaparral Super Alliance
 - Quercus garyana var. brevesii Shrubland Alliance (Brewer Oak)
 - Temperate and Boreal Shrubland and Grassland Formation Subclass
 - California Annual and Perennial Grassland Macro Group
 - California Mixed Annual/Perennial Freshwater Vernal Pool/Swale Bottomland and California Annual and Perennial Grassland Macro
 - California Mixed Annual/Perennial Freshwater Vernal Pool/Swale Bottomland Group (meadows only)
 - Arid West Freshwater Emergent Marsh Macro Group
 - Arctic Tundra or No Vegetation
 - Build Up and Urban Disturbance
 - Agriculture
 - Restoration Sites
 - Water