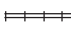





Legend

-  Railroad
-  Major Highway
-  Major Tributary
-  Tehama West Watershed

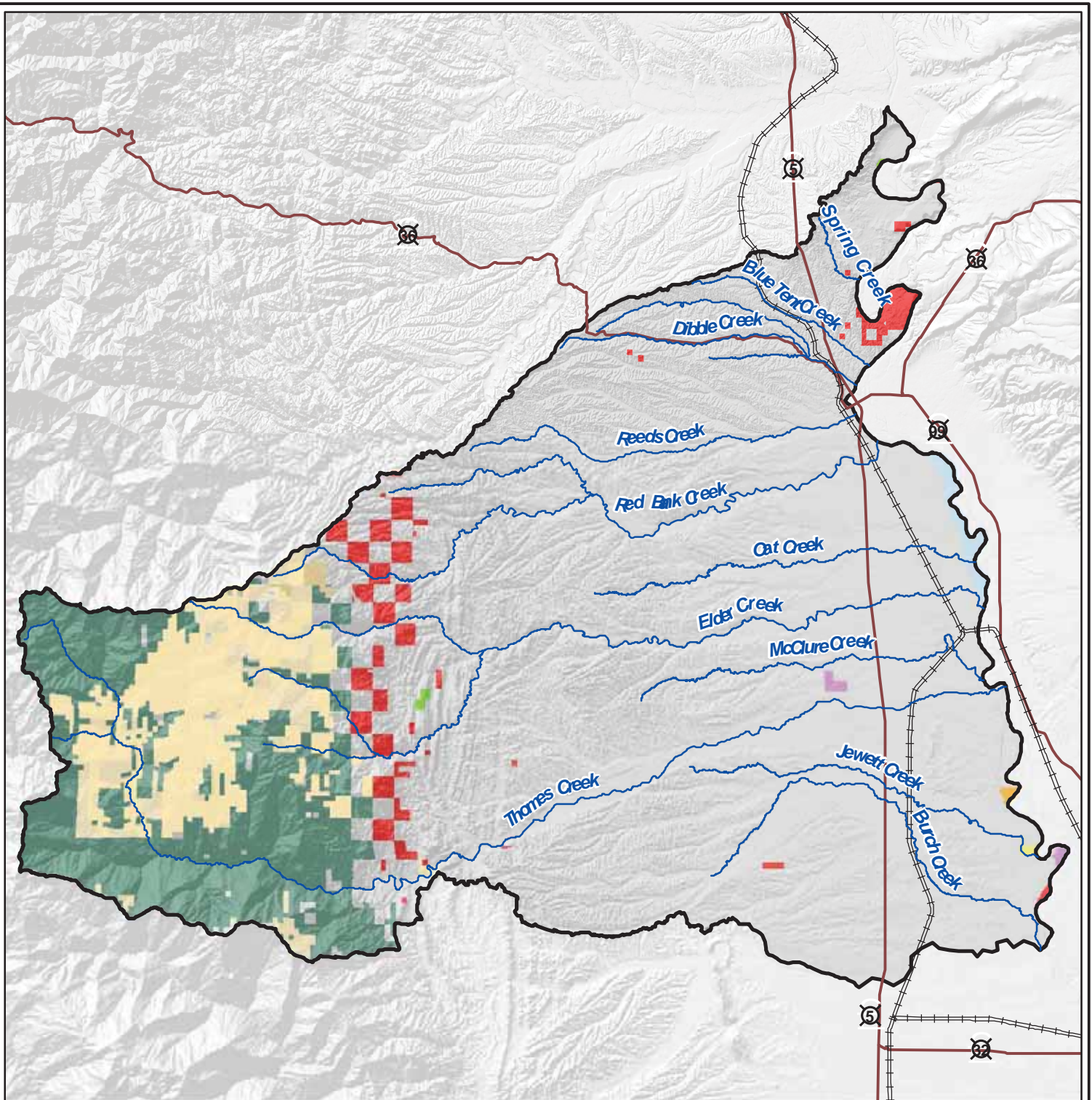
5



FIGURE 1
WATERSHED BOUNDARY
TEHAMA WEST WATERSHED ASSESSMENT

VESTRA



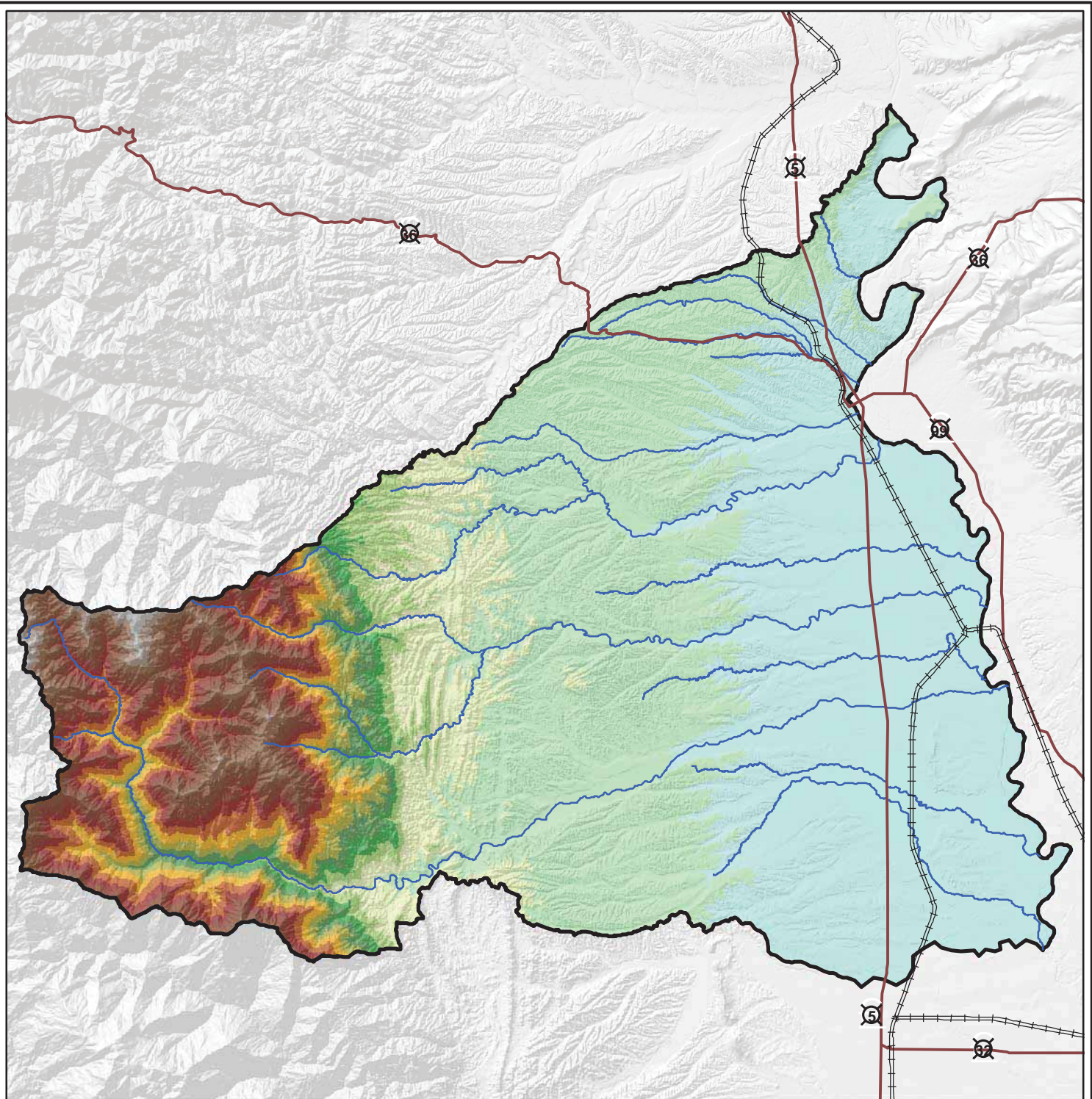


Legend

- | | | |
|-------------------------|---|--|
| ==== Railroad | ■ Bureau Of Land Management (14,745 acres) | ■ US Fish and Wildlife Service (2767 acres) |
| — Major Highway | ■ CA Dept of Fish and Game (760 acres) | ■ USDA Forest Service (83,826 acres) |
| — Major Tributary | ■ CA Dept of Parks and Recreation (260 acres) | ■ Private (508,592 acres) |
| □ Tehama West Watershed | ■ Department of Defense (27 acres) | ■ Crane Mills (55,530 acres) |
| | ■ State Lands Commission (410 acres) | ■ Sierra Pacific Ind. (1,001 acres) |
| | ■ The Nature Conservancy (250 acres) | |



FIGURE 2
OWNERSHIP
TEHAMA WEST WATERSHED ASSESSMENT



Legend

- | | | | |
|-----------------------|--------------------|--------------------|--------------------|
| Railroad | 500 feet | 3,001 - 3,500 feet | 6,001 - 6,500 feet |
| Major Highway | 501 - 1,000 feet | 3,501 - 4,000 feet | 6,501 - 7,000 feet |
| Major Tributary | 1,001 - 1,500 feet | 4,001 - 4,500 feet | 7,001 - 7,500 feet |
| Tehama West Watershed | 1,501 - 2,000 feet | 4,501 - 5,000 feet | 7,501 - 8,000 feet |
| | 2,001 - 2,000 feet | 5,001 - 5,500 feet | 8,001 - 8,500 feet |
| | 2,501 - 3,000 feet | 5,501 - 6,000 feet | |

5



**FIGURE 3
ELEVATION BANDS
TEHAMA WEST WATERSHED ASSESSMENT**



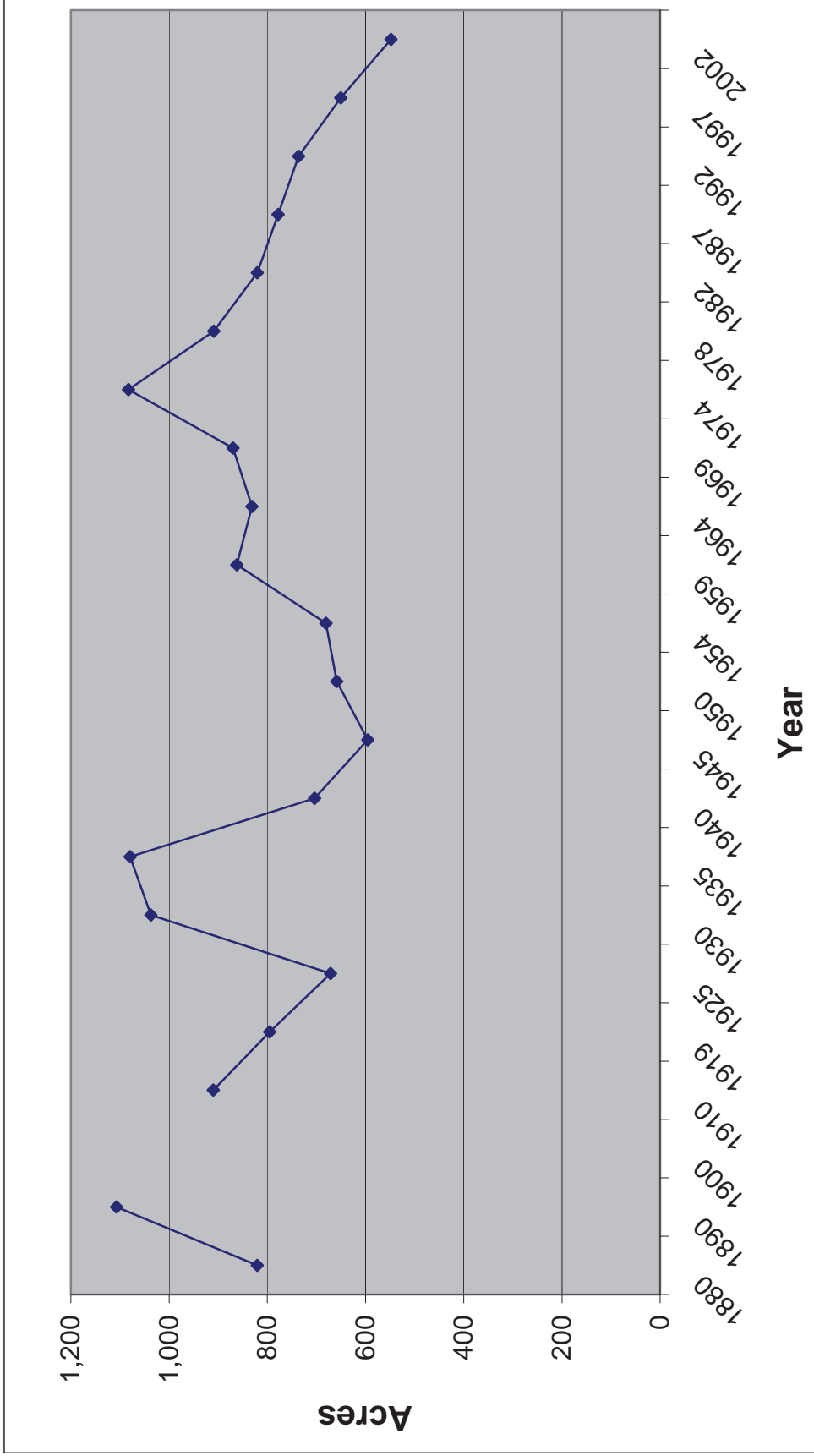


FIGURE 4
 AVERAGE FARM SIZE, 1880-2002
 TEHAMA WEST WATERSHED ASSESSMENT



SOURCE: NATIONAL AGRICULTURAL STATISTICS SERVICE

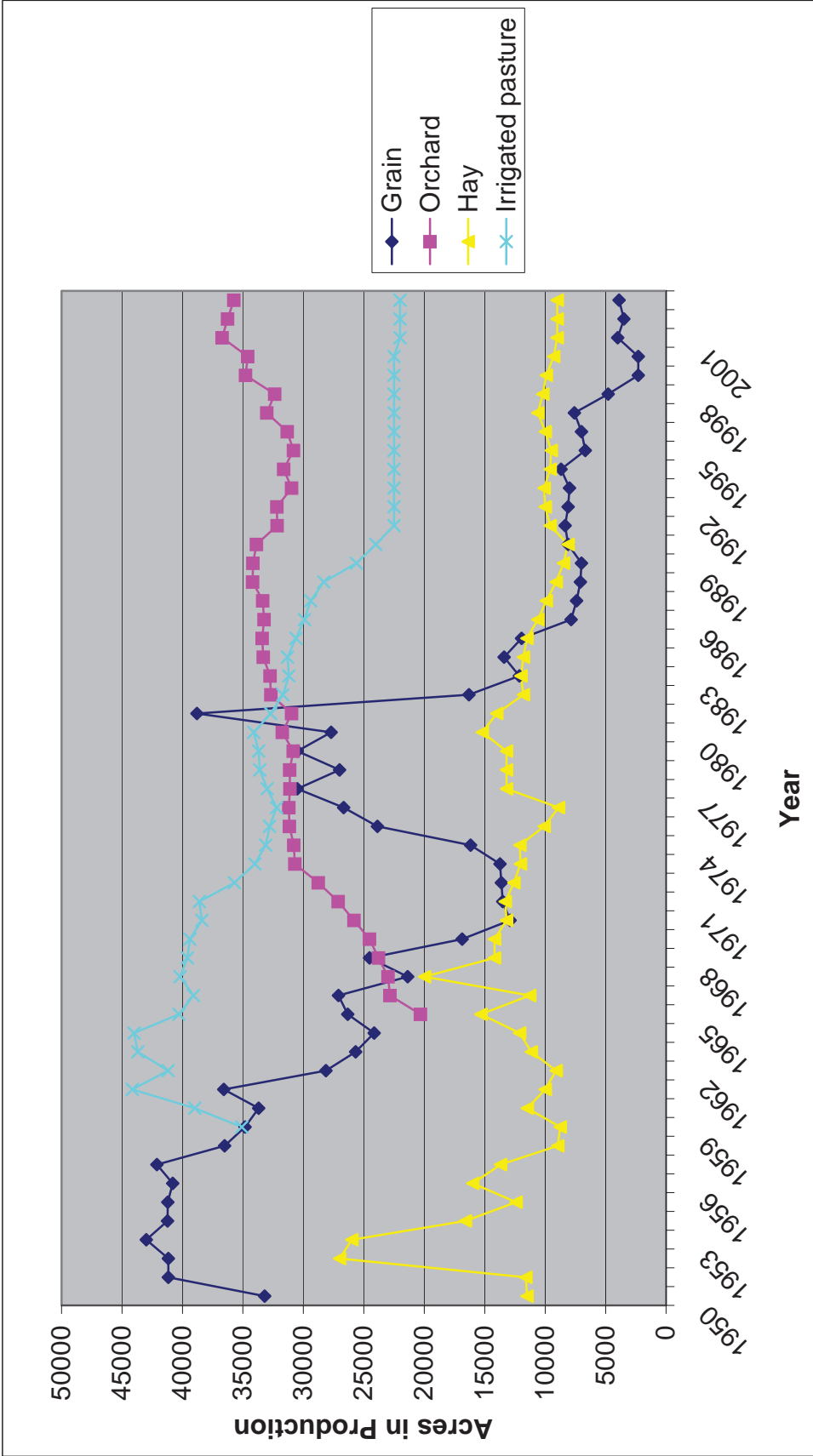
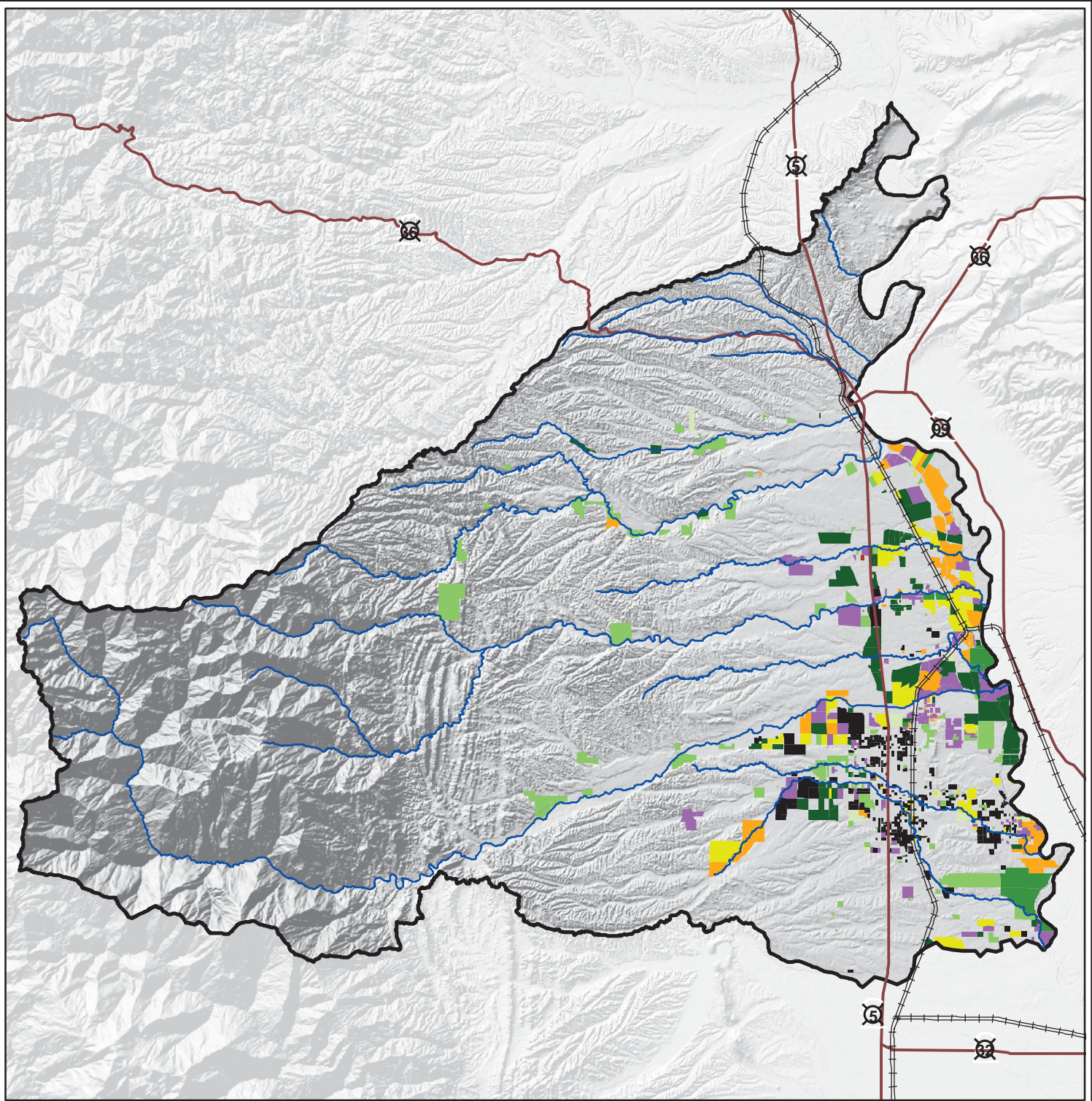


FIGURE 5
 MAJOR CROP TYPES, 1950-2003
 TEHAMA WEST WATERSHED ASSESSMENT



SOURCE: TEHAMA COUNTY AGRICULTURAL CROP REPORTS



Legend

- | | | |
|-------------------|-------------------------|----------------------------------|
| ==== Railroad | Field Crops - Irrigated | Irrigated Walnut Orchard |
| — Major Highway | Row Crops - Irrigated | Irrigated Almond Orchard |
| — Major Tributary | Irrigated Olive Orchard | Irrigated Misc. Orchard |
| Field Crops | Irrigated Prune Orchard | Vine and Bush Fruits - Irrigated |
| Orchard | | |



5



FIGURE 6
CROP TYPES
TEHAMA WEST WATERSHED ASSESSMENT

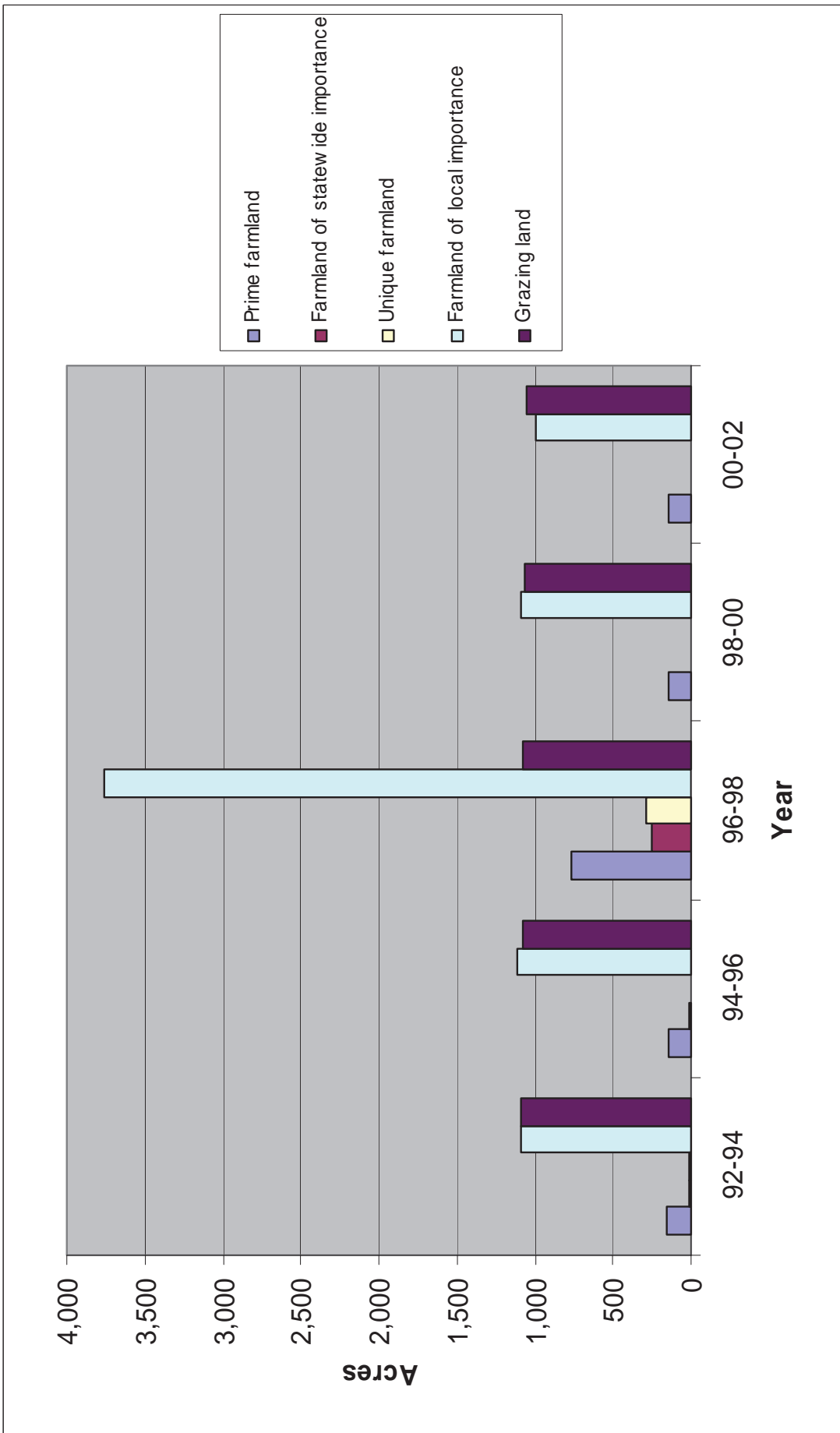
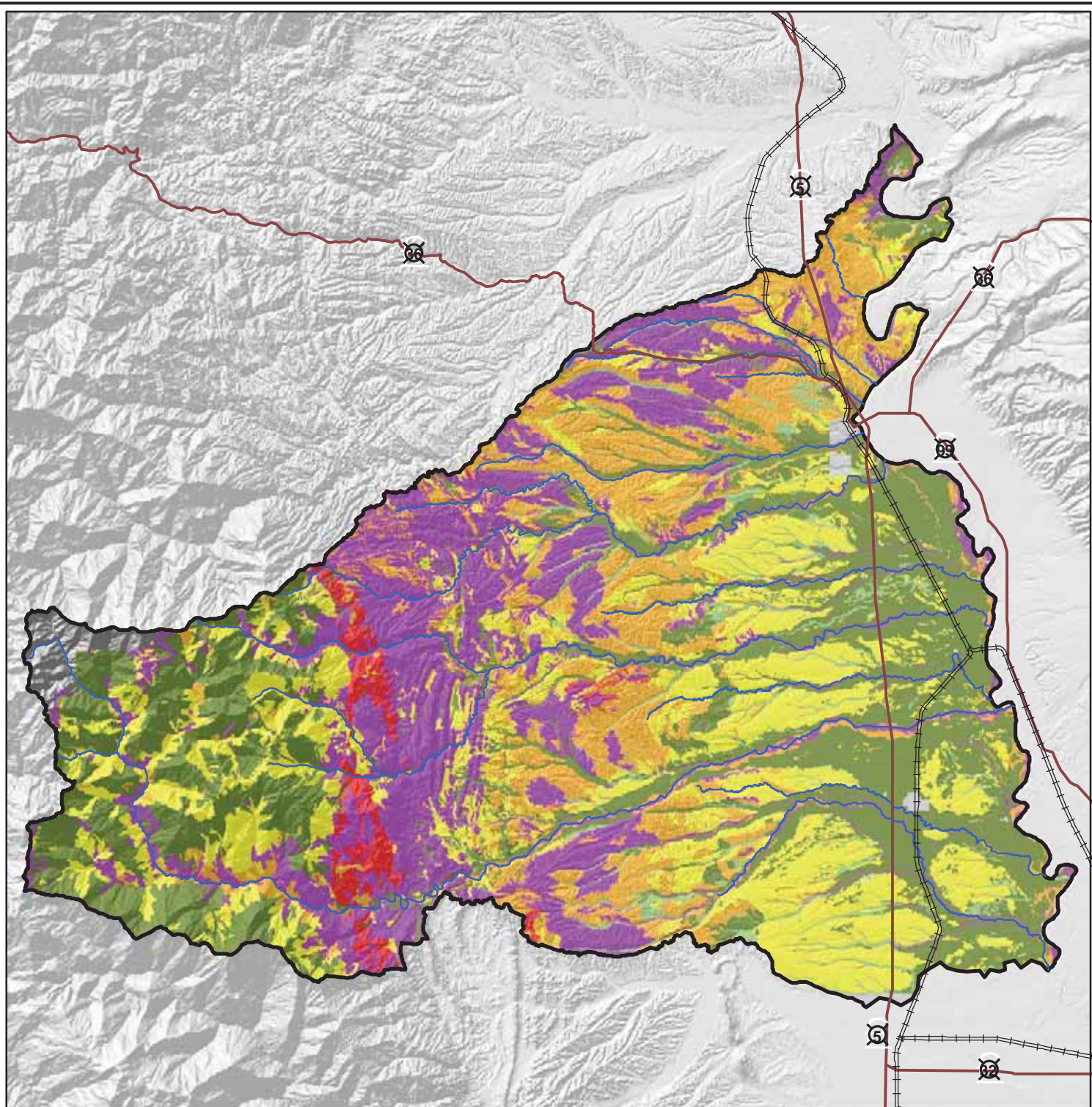


FIGURE 7
 AGRICULTURAL LANDS CONVERTED TO URBAN LANDS
 TEHAMA WEST WATERSHED ASSESSMENT



SOURCE: TEHAMA COUNTY AGRICULTURAL CROP REPORTS



Legend

- Railroad
- Major Highway
- Major Tributary
- Tehama West Watershed
- Low
- Low to Moderate
- Moderate
- High
- High to Extreme
- Extreme

5



FIGURE 8
SOIL HAZARD EROSION RATINGS
TEHAMA WEST WATERSHED ASSESSMENT



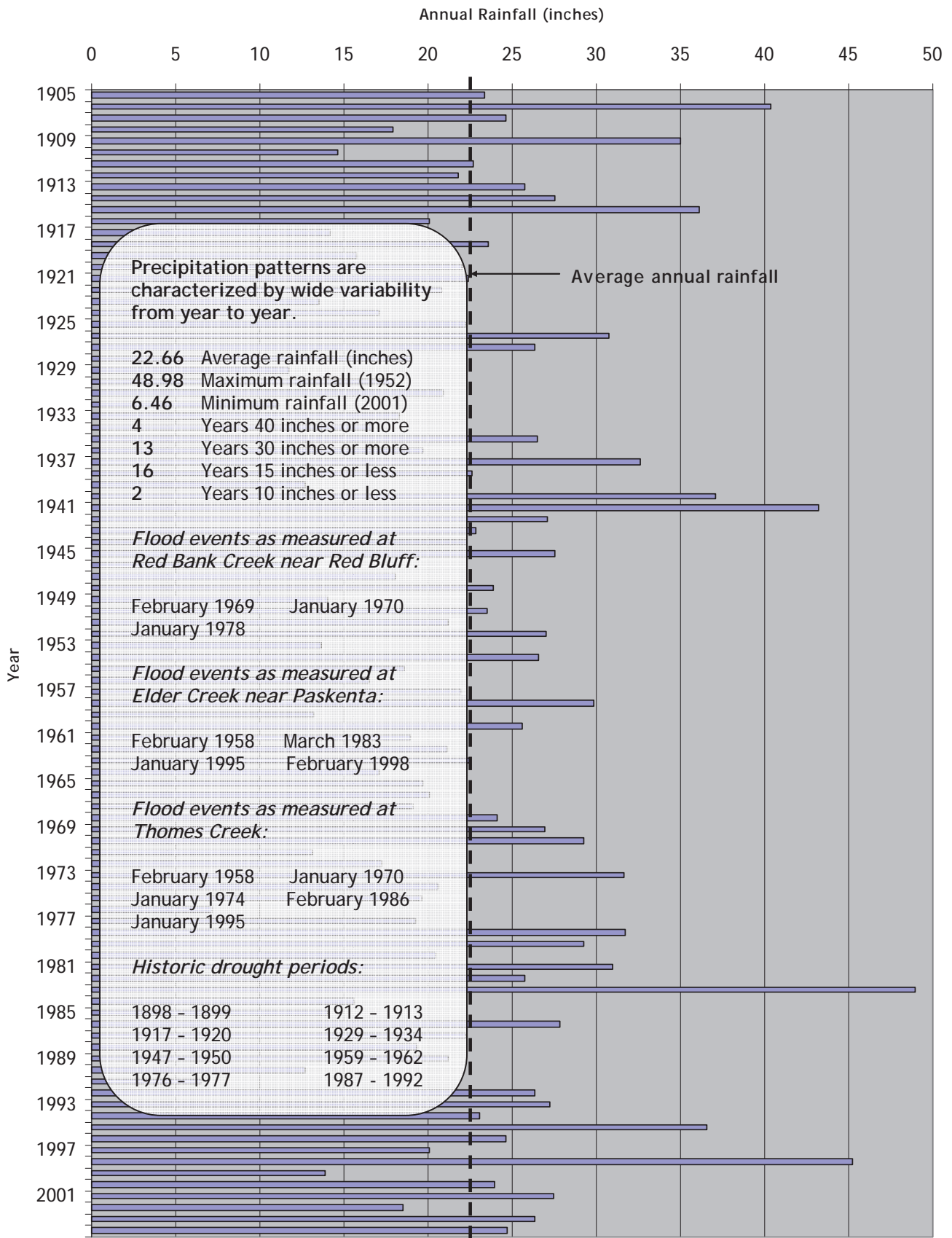
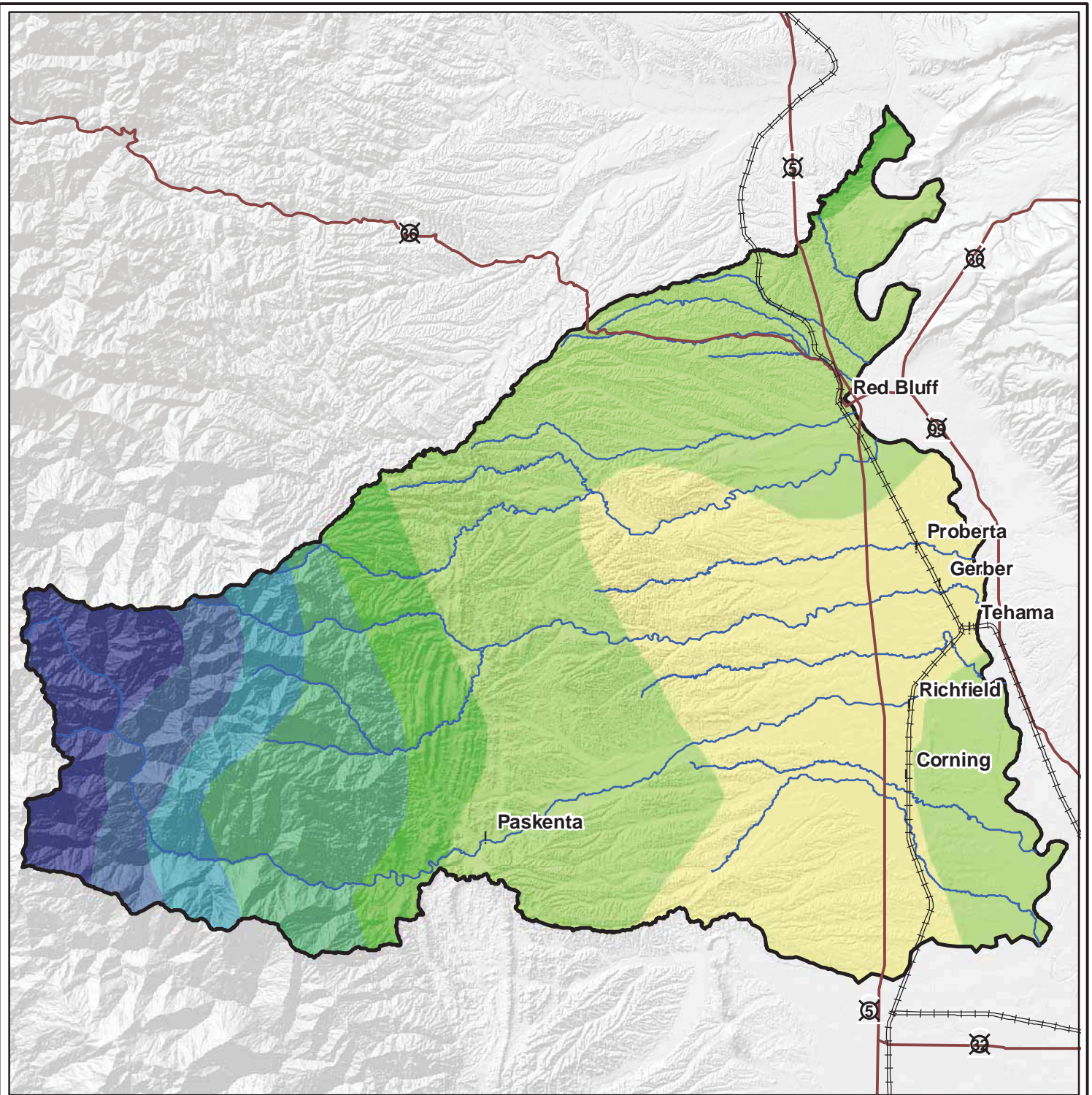


FIGURE 9
 HISTORICAL PRECIPITATION
 AND CLIMATE RECORDS
 TEHAMA WEST WATERSHED ASSESSMENT





Legend

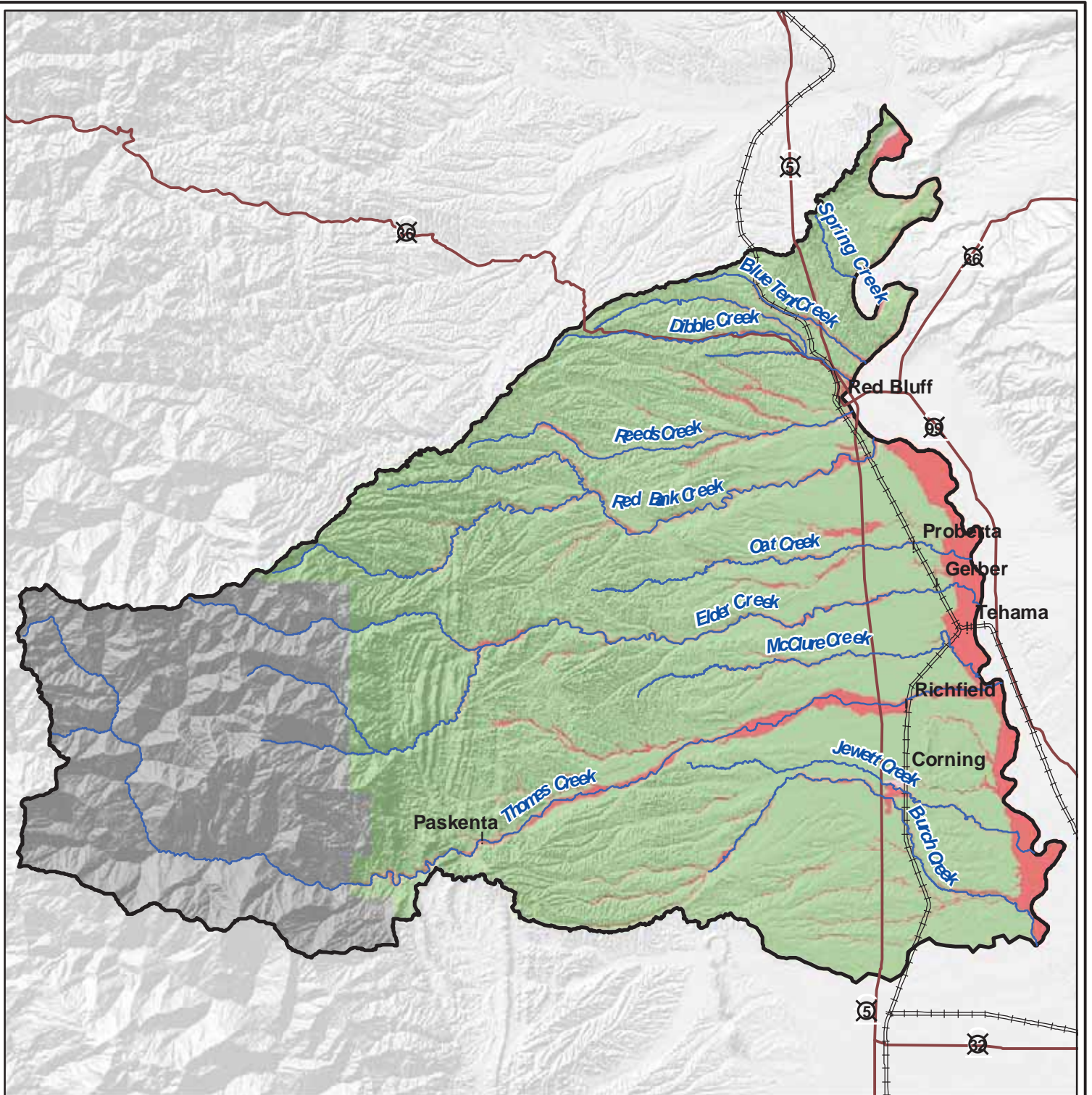
- | | | |
|-----------------------|---------------------|-----------------|
| Railroad | 18 inches and less | 35 to 45 inches |
| Major Highway | 18 to 22.5 inches | 45 to 55 inches |
| Major Tributary | 22.5 to 27.5 inches | 55 to 60 inches |
| Tehama West Watershed | 27.5 to 35 inches | |

5










FIGURE 10
ISOHYETAL MAP
TEHAMA WEST WATERSHED ASSESSMENT





Legend

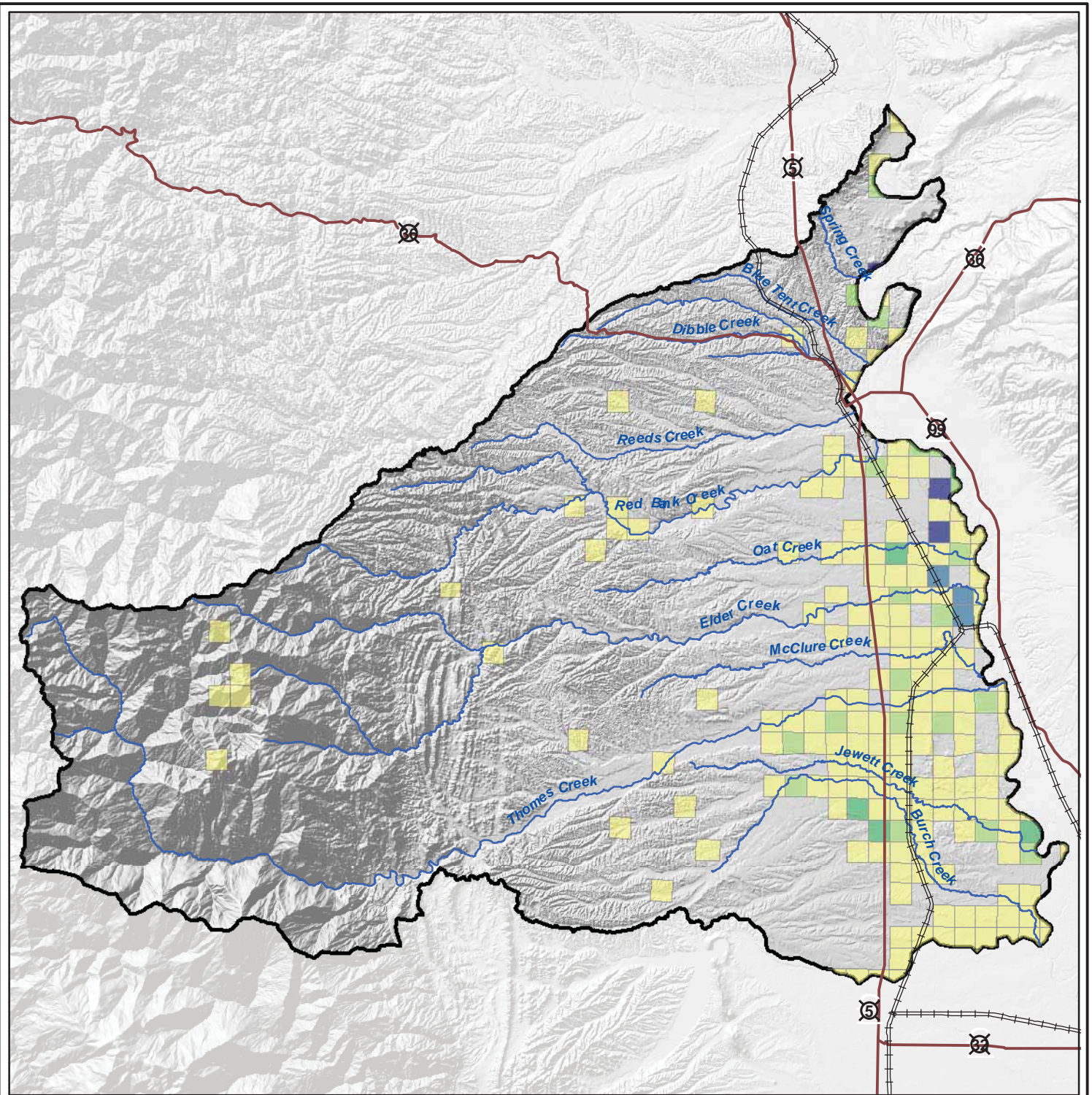
-  Railroad
-  Major Highway
-  Major Tributary
-  Tehama West Watershed
-  Zone A - Area subject to inundation
-  Zone X - Area outside of 500-year flood
-  Zone D - Unstudied area



5



FIGURE 11
FLOOD INUNDATION ZONES
TEHAMA WEST WATERSHED ASSESSMENT



Legend

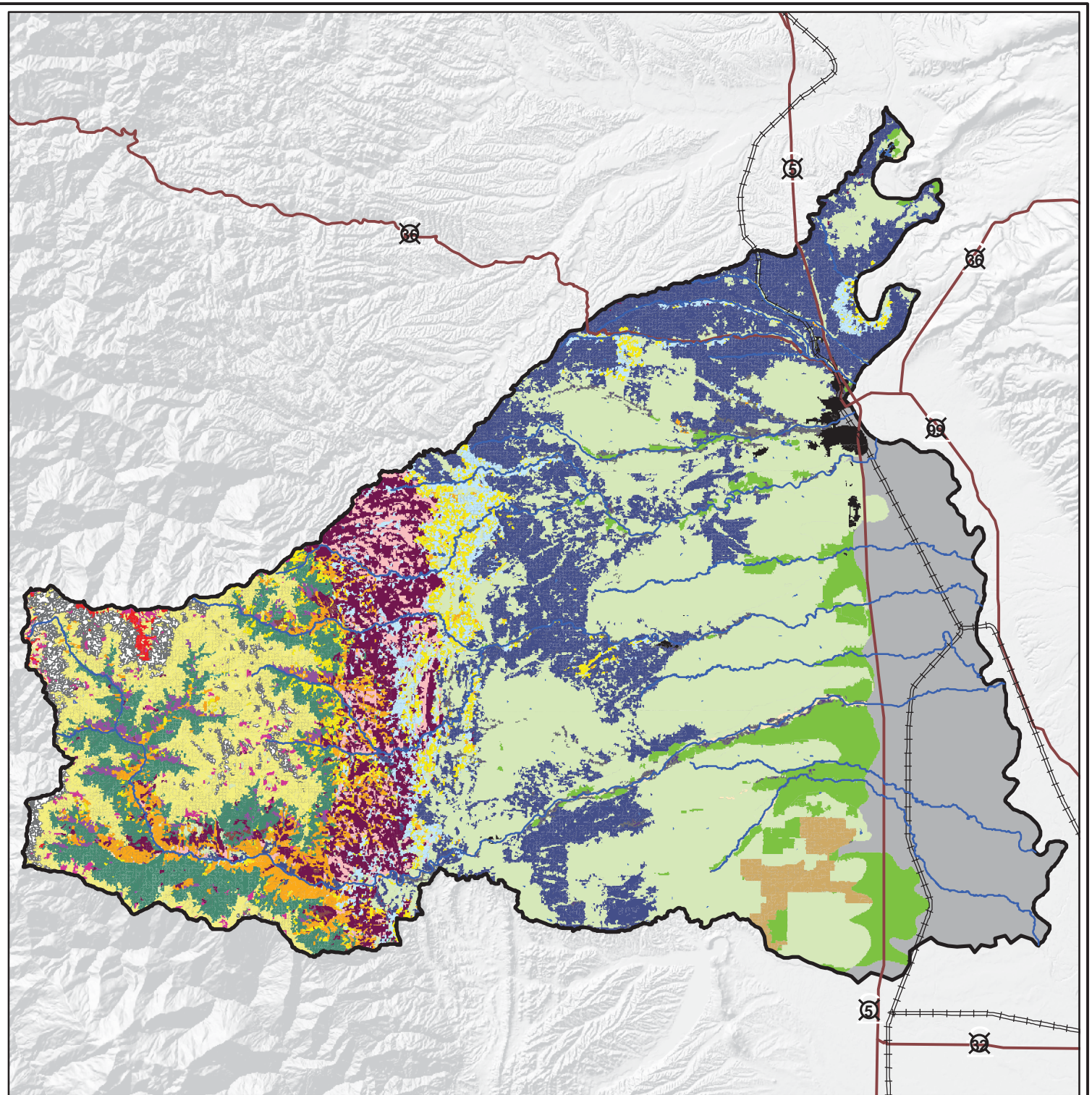
- | | | | |
|------|-----------------------|--|----------------------------------|
| ==== | Railroad | | 1 - 5,000 pounds/acre/year |
| — | Major Highway | | 5,001 - 10,000 pounds/acre/year |
| — | Major Tributary | | 10,001 - 15,000 pounds/acre/year |
| □ | Tehama West Watershed | | 15,001 - 20,000 pounds/acre/year |
| | | | 20,001 - 30,000 pounds/acre/year |

5



FIGURE 12
PESTICIDE USE
TEHAMA WEST WATERSHED ASSESSMENT





Legend

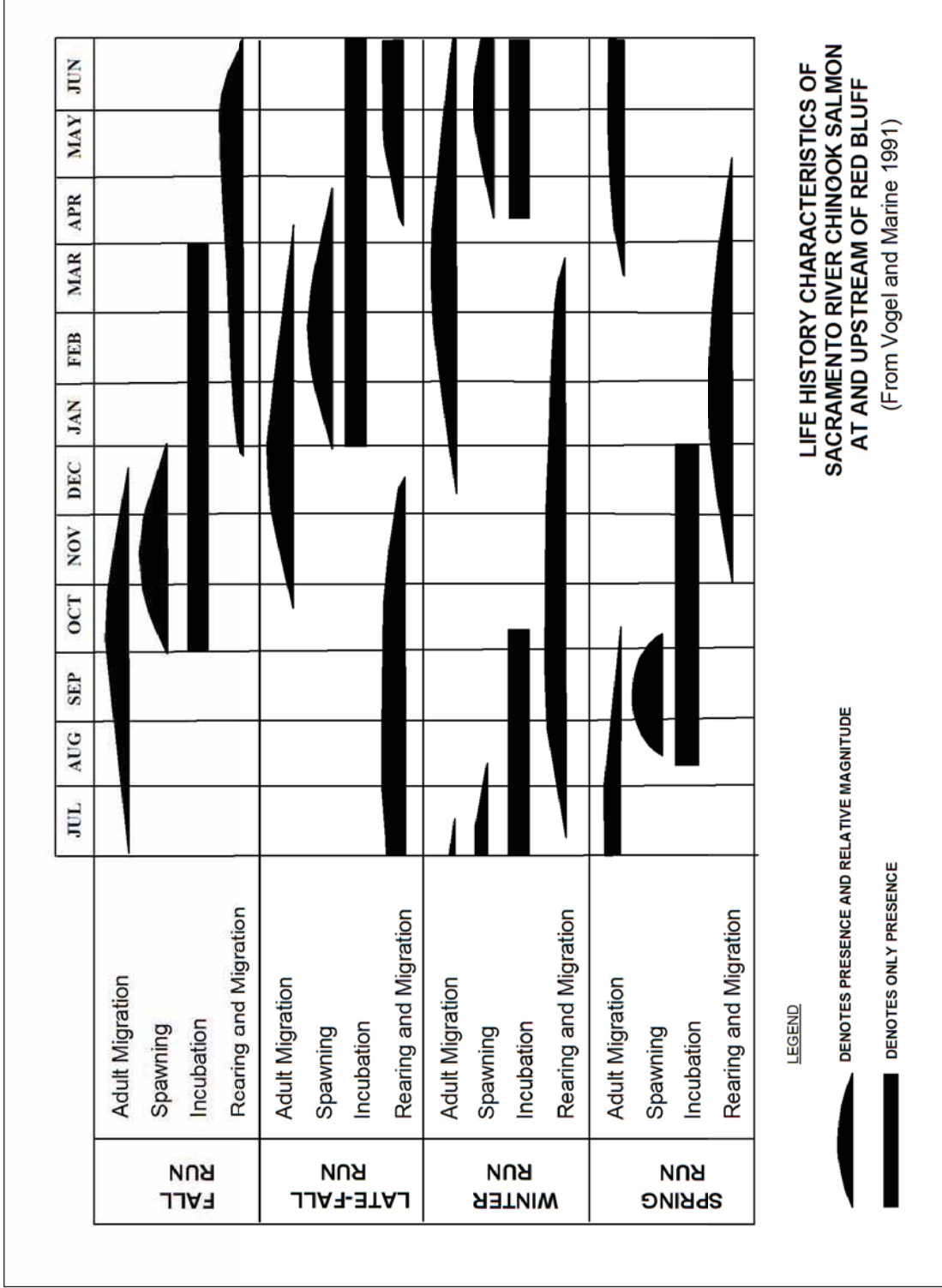
- | | | | | |
|-----------------------|--------------------------|----------------------------|---------------------------|---------------------|
| Railroad | Unclassified | Chamise-Redshank Chaparral | Mixed Chaparral | Red Fir |
| Major Highway | Annual Grass | Agriculture-Crops | Montane Chaparral | Urban |
| Major Tributary | Barren | Douglas Fir | Montane Hardwoods Conifer | Valley Oak Woodland |
| Tehama West Watershed | Blue Oak Foothill Pine | Eucalyptus | Montane Hardwood | Water |
| | Blue Oak Woodland | Jeffrey Pine | Montane Riparian | White Fir |
| | Closed Cone Pine-Cypress | Klamath Mixed Conifer | Ponderosa Pine | Wet Meadow |



5



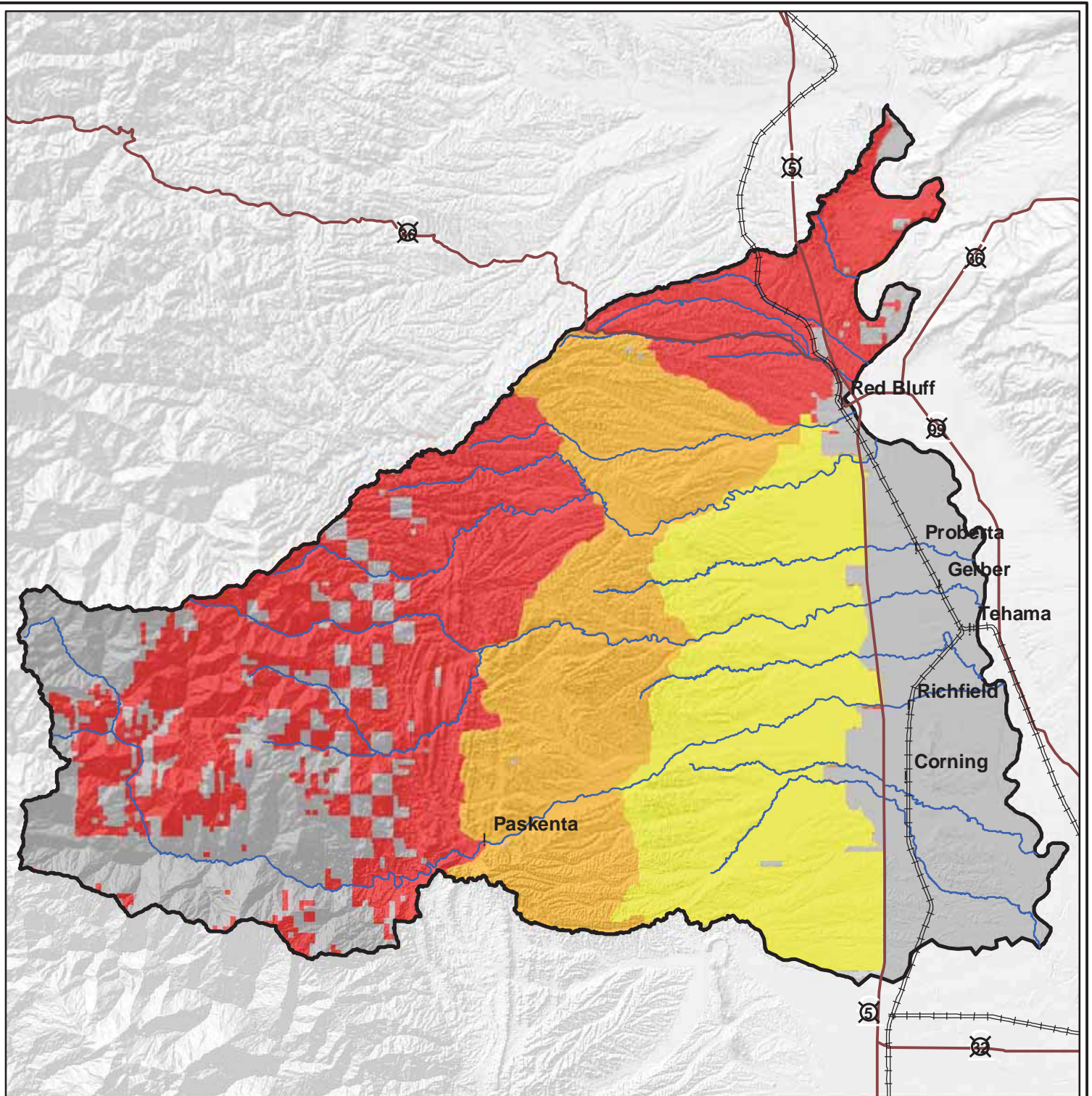
FIGURE 13
CALVEG - WHR
TEHAMA WEST WATERSHED ASSESSMENT



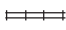







LIFE HISTORY CHARACTERISTICS OF SACRAMENTO RIVER CHINOOK SALMON AT AND UPSTREAM OF RED BLUFF
 (From Vogel and Marine 1991)

FIGURE 14
 LIFE HISTORY CHARACTERISTICS OF SACRAMENTO RIVER CHINOOK SALMON AT AND UPSTREAM OF RED BLUFF
 TEHAMA WEST WATERSHED ASSESSMENT





Legend

- | | |
|---|---|
|  Railroad |  Very High |
|  Major Highway |  High |
|  Major Tributary |  Moderate |
|  Tehama West Watershed |  Not State Responsibility Area |

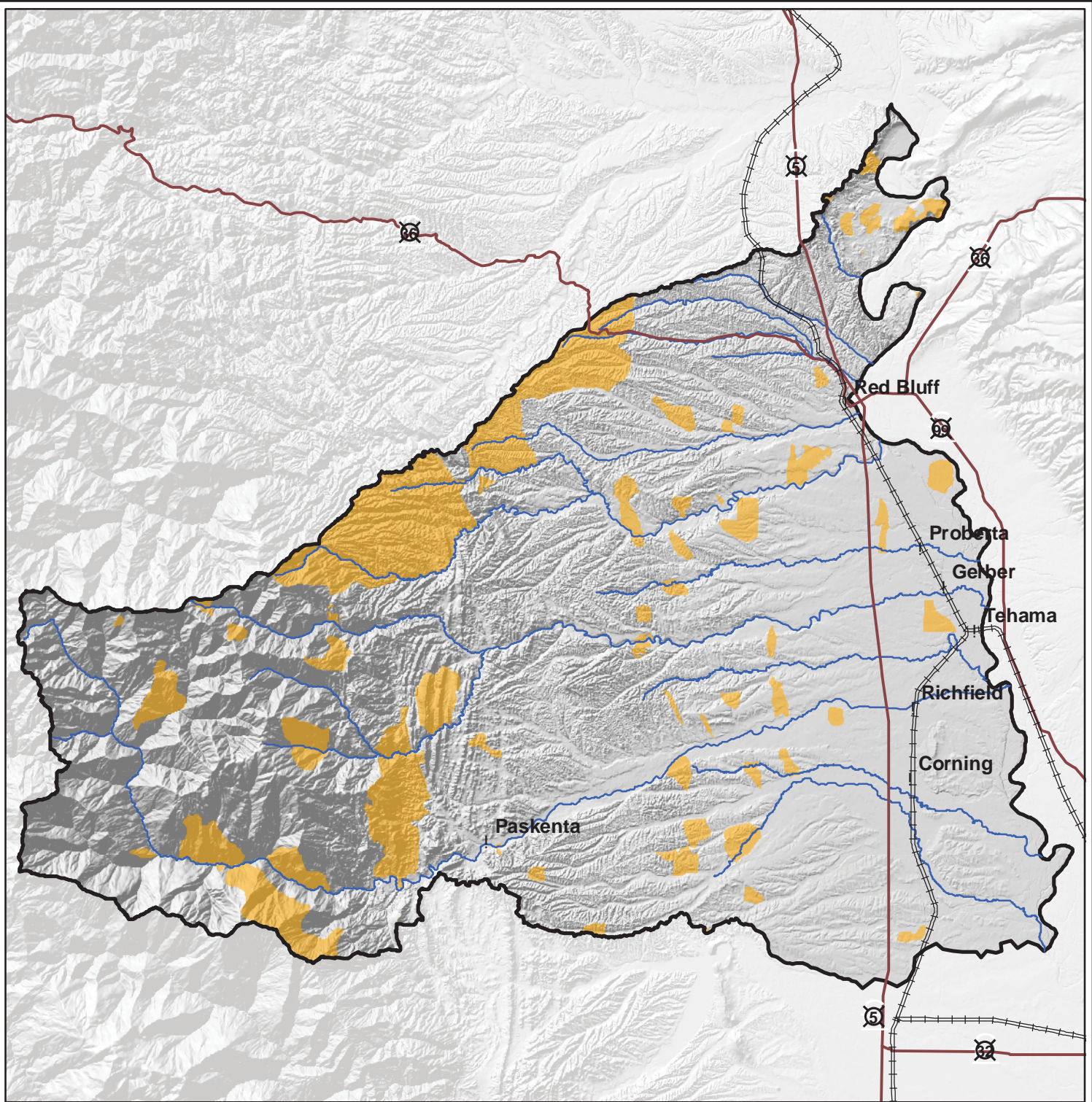
5








FIGURE 15
FIRE HAZARD SEVERITY ZONES
 TEHAMA WEST WATERSHED ASSESSMENT

VESTRA





Legend

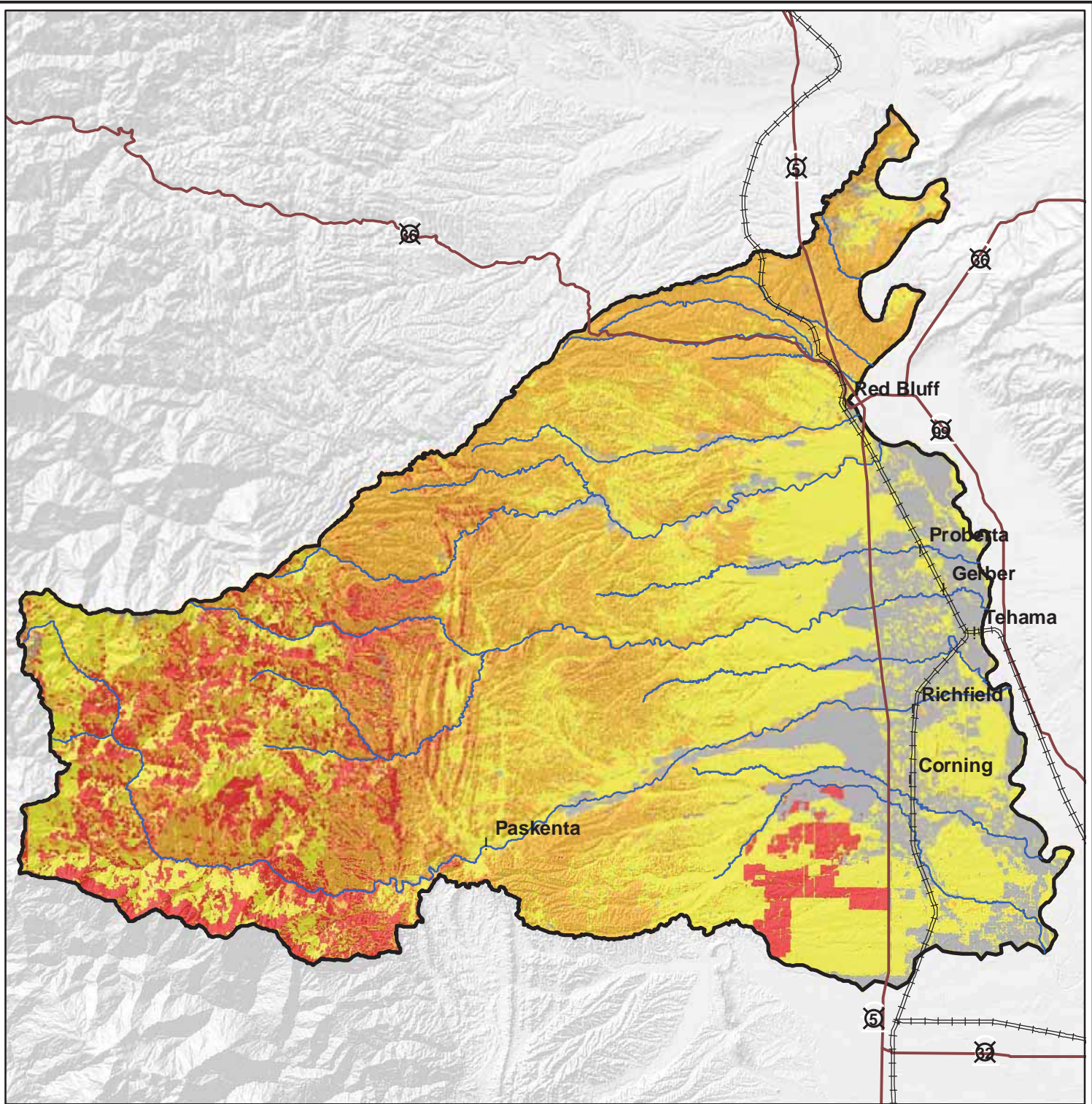
-  Railroad
-  Major Highway
-  Major Tributary
-  Tehama West Watershed
-  Historical Fire Area

5

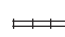









FIGURE 16
HISTORICAL FIRE BOUNDARIES
 TEHAMA WEST WATERSHED ASSESSMENT





Legend

- | | |
|---|--|
|  Railroad |  Non-Fuel |
|  Major Highway |  Moderate |
|  Major Tributary |  High |
|  Tehama West Watershed |  Very High |

5



FIGURE 17
FUEL RANKS
TEHAMA WEST WATERSHED ASSESSMENT

